

If you do not currently receive our monthly highlights and would like to, please email [miriam\\_boulia@discovery.com](mailto:miriam_boulia@discovery.com)

[Click here for press office contacts](#)  
Click on logo to go directly to channel



# Highlights September 2013



# NAKED AND AFRAID

UK SERIES PREMIERE

THURSDAYS FROM 12TH SEPTEMBER, 9.00PM

What happens when you put a naked man and a naked woman in one of the most remote areas of the world? This brand new and rare series *Naked and Afraid* takes the term 'survival of the fittest' to the very next level. Each week, a new pair of complete strangers, one man and one woman, will find themselves stranded in and, quite literally exposed, to one of the world's most extreme weather environments. This duo will be left high and dry with no food, no water and no clothes. They must survive on their own for a full 21 days, with nothing but one personal item each and the knowledge

that the only prize is their pride and sense of accomplishment. These brazen and bold couples will get acquainted with each other and their new surroundings very quickly, forcing them to question and test everything they may think they know about their acquired survival skills and instincts. Will the nude castaways have the brains and brawn to endure the harsh conditions? Or will the challenges prove to be too overbearing? Watch as each couple battles the elements, each other, and their own inner weaknesses to see who will triumph over the terrain or fail under the force of nature.

Discovery HD

CONTACT  
[caroline\\_watt@discovery.com](mailto:caroline_watt@discovery.com)



# CAR VS WILD

UK SERIES PREMIERE

THURSDAYS FROM 25TH SEPTEMBER, 10.00PM

Gary Humphrey, a former British Special Forces soldier, Bill Wu, a California-based car fanatic and problem solver, and Ruby - their beloved 4x4, are back in *Car vs. Wild* taking themselves, and their trusty motor, to the limit to attempt motoring milestones never before achieved, in the most extreme places in the world. Watch them as they take on Mexico's Sierra Juarez Mountains, 1800m above sea-level, following a native American foot route to a sacred rock platform, the Sky Platform, never reached by car before. Bill & Gary attempt to smash the altitude record and get Ruby to be the highest car ever on the 14,000ft high Pico

De Orizaba, Mexico's highest mountain. This volcano has a fearsome reputation as a killer peak- not everyone who goes up this mountain comes down. And the boys head toward a sacred lagoon, never visited by a car before. To get there they must travel up the winding, dangerous rivers of the Los Tuxtle jungle - which some say is protected by spirits. Taking on one river is usually challenge enough, but driving up one will need a new level of skill. With intense moments and boundaries pushed to the limits, they go where no car has ever gone before.

Discovery HD

CONTACT  
caroline\_watt@discovery.com



# WHEELER DEALERS

UK SERIES PREMIERE

TUESDAYS FROM 17TH SEPTEMBER, 9.00PM

Edd and Mike are back, continuing their mission to find the best deals in all new *Wheeler Dealers* as they travel across the globe to buy, restore and sell some of the world's most iconic motors. As Edd gets stuck in back at the garage, Mike sets off on his travels, searching for the ultimate deals. Some of the classic cars

snapped up by Mike in this series include a Lamborghini Urraco a Lotus Elise and an iconic Cadillac Coupe De Ville. Along the way there'll be top tips for buying and selling, advice on where to find the best deals on parts, trips to see specialist repair processes, plus loads of in-depth mechanical know how.

Discovery HD

CONTACT  
[caroline\\_watt@discovery.com](mailto:caroline_watt@discovery.com)



# FIFTH GEAR

UK SERIES PREMIERE

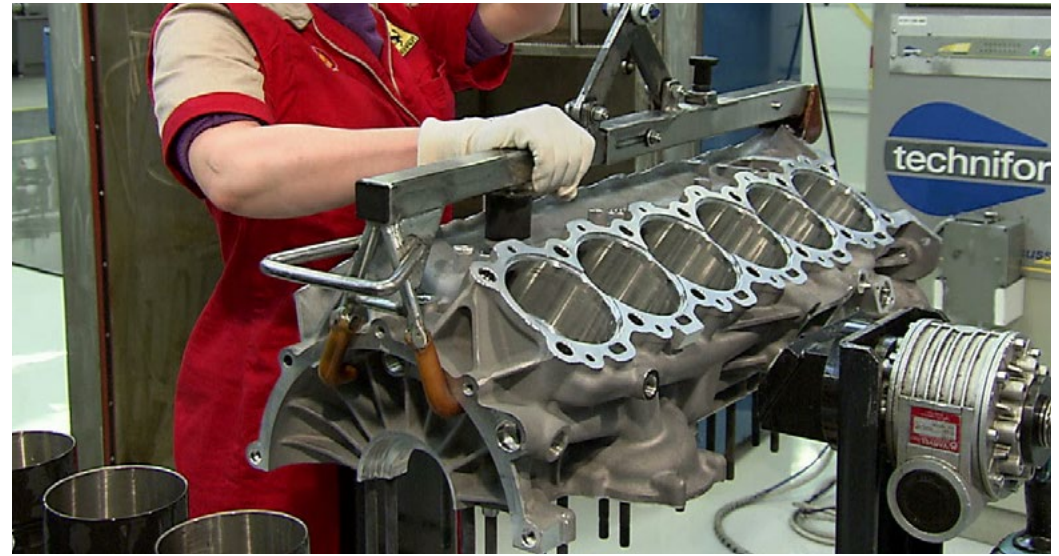
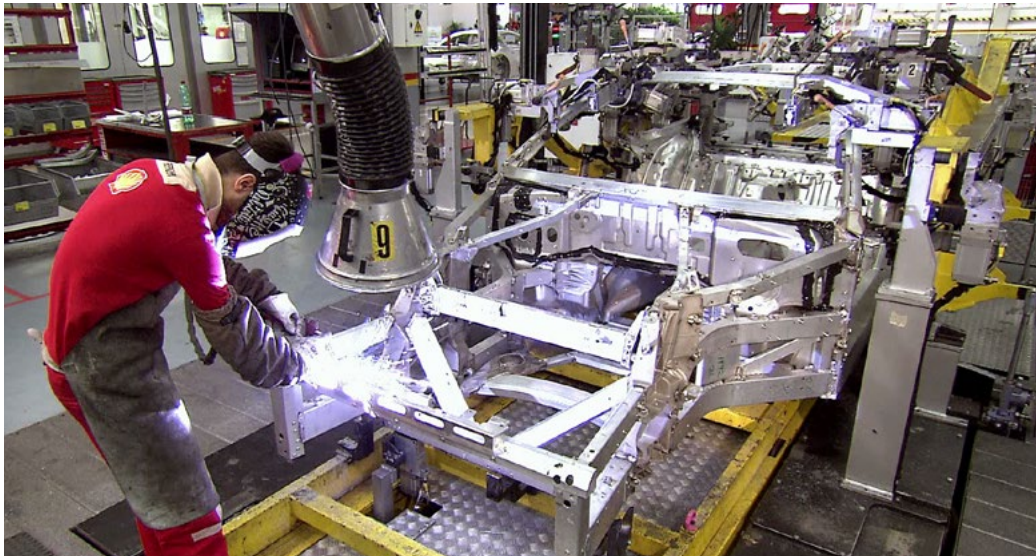
MONDAYS FROM 16TH SEPTEMBER, 8.00PM

*Fifth Gear* is back for a new series with Tiff Needell, Jason Plato, Vicki Butler-Henderson and Jonny Smith. The team tests the cheapest car vs. Europe's most expensive place with a trip to one of the most expensive ski resorts, Courchevel in France. The team tries to find out if VW's most important car, the Golf, is the best

hatchback on the market. Also, find out the best tips on how to restore your cars lost performance. In the first episode Tiff & the team fight it out to see who wins the competition between supercar speed and movie star glamour, featuring a Mercedes SL63 AMG and an Audi R8 Spyder.

Discovery HD

CONTACT  
caroline\_watt@discovery.com



# HOW IT'S MADE: DREAM CARS

UK SERIES PREMIERE

WEDNESDAYS FROM 25TH SEPTEMBER, 8.00PM & 8.30PM

This series of *How It's Made: Dream Cars* is a dream car special. How It's Made Dream Cars takes viewers through the very detailed and concise construction of the Morgan Aero Coupe and the Porsche 911. From how the materials are fitted to the adhesive that they use the team give you a very precise insight to what happens behind the scenes

in the factories to transform a heap of metal into these luxurious motor cars. Ever wondered how a Morgan Aero Coupe was made? Or ever wondered how a Porsche 911 was made? Join the *How It's Made* crew as they go to its birthplace; explore the inner workings and its gorgeous exterior in the first two episodes of this brand new series.

Discovery HD

CONTACT  
caroline\_watt@discovery.com



# FUTURE FIREPOWER

UK SERIES PREMIERE

THURSDAYS FROM 19TH SEPTEMBER, 10.00PM

*Future Firepower* is a brand new series taking a look at new weapons being developed from high tech remote controlled weapons and devastating rapid firing machine guns, to next generation rocket launchers. *Future Firepower* gives an insight into each weapon and what catastrophic destruction it can cause through demonstrations with members of

the military. In the first episode hi-tech defensive weaponry combats the aggression of a rogue state army in a scenario with super-speed jets, remote-controlled weapon stations and mini-robots infiltrating civilian areas. Watch as they strive to end the war as fast as possible using every tactic in their arsenals.

Discovery HD

CONTACT  
caroline\_watt@discovery.com



# ANIMAL AIRPORT

UK SERIES PREMIERE

THURSDAYS FROM 26TH SEPTEMBER, 8.00PM & 8.30PM

Heathrow is the world's busiest international airport, but as well as the 70 million human passengers, each year around 40 million animals and fish fly in and out of the UK, most of them checking in at the Animal Reception Centre, affectionately known as the ARC. With 10,000 dogs, 6,000 cats and over 10,000 exotic animals arriving every year *Animal Airport* is back capturing more behind-the-scenes action in the terminal

buildings and on the runways. This series, animals tended to by the ARC include a rescued puppy who has been mistreated, two roaming racoon dogs who find a temporary home and Anne travels to Germany to split up a dangerous wolf pack. In the first episode Ross tackles an especially angry cat, the life of a tiny monkey is in Stuart's hands and Sian takes on some unruly alpacas.

**ANIMAL  
PLANET HD**

CONTACT  
[kate\\_keilty@discovery.com](mailto:kate_keilty@discovery.com)





# MONKEY LIFE

UK SERIES PREMIERE

WEEKDAYS FROM 2ND SEPTEMBER, 6.00PM

Follow the team and animals of Monkey World in a brand-new series of *Monkey Life*. Based in Dorset, the largest monkey rescue and rehabilitation centre in the world which has helped countless monkeys over the past 25 years, rescuing them from testing sites, owners who are mistreating them and those being used for entertainment. Home to more than 240 primates this is not a walk in the park

and the team deal with new problems and medical issues each day. This series follows the monkeys once more as the park grows, bringing many new exciting stories following the ongoing work of Monkey World; the latest news from Dao Tien, Monkey World's sister sanctuary in Vietnam, and of course an update on the day-to-day lives of the favourite Monkey residents.

**ANIMAL  
A PLANET HD**

CONTACT  
[kate\\_keilty@discovery.com](mailto:kate_keilty@discovery.com)



# WILD APPALACHIA

UK PREMIERE ONE-OFF

MONDAY 2ND SEPTEMBER, 8.00PM

The Appalachians, one of the oldest mountain ranges on earth adorned by the ancient forests, a haven for the wild and dangerous, a place with familiar faces and new arrivals all on a quest for food and survival. *Wild Appalachia* unveils a land of rarely seen creatures and once in a lifetime events. Lives here are shaped by landscape and seasons,

by surprise encounters and running battles, by the law of the wild and law of the land. Yet this is not some remote wilderness, this is an area of high drama and spectacular beauty which is on the doorstep of millions of people. This is wild Appalachian a forest of wilderness on America's east coast, in the Great Smoky Mountains.

**ANIMAL  
PLANET HD**

CONTACT

[kate\\_keilty@discovery.com](mailto:kate_keilty@discovery.com)



# CATFISHIN' KINGS

UK SERIES PREMIERE

THURSDAYS FROM 5TH SEPTEMBER, 8.00PM

*Catfishin' Kings*, hosted by Texas native Brady Knowlton, is a brand new series, following a local folk hero who legalised the adrenaline-fueled sport of noodling - catfish fishing with bare hands. In his home state of Texas, Brady dunks the nation's top noodling teams into murky waters where they compete in high stakes competition. Noodlers participating in

the tournament include Team Tennessee, a three man team with experience in some of the most vicious waters; Team Louisiana, aka Stewart and Benny whose strategy is to fish in high-risk waters for high catfish rewards; and Team Texas, brothers Ronald and Greg who have been catfish fishing in Texas for years.

**ANIMAL  
A PLANET HD**

CONTACT  
[kate\\_keilty@discovery.com](mailto:kate_keilty@discovery.com)



# FINDING BIGFOOT

UK SERIES PREMIERE

SUNDAYS FROM 1ST SEPTEMBER, 8.00PM

Join four passionate investigators as they continue on their mission to find the elusive creature known as Bigfoot or the Sasquatch in the exciting new series of *Finding Bigfoot*. Investigating North America's most active Bigfoot hot spots, renowned Sasquatch searchers, Matt MoneyMaker, Bobo Fay, Cliff Barackman and field biologist Ranae Holland, travel from the forests of New Mexico to the shores of Rhode Island in an attempt to authenticate claims of creature sightings. Using proven search methods,

cutting-edge technology, and radical new techniques, the team uncovers startling evidence of the existence of this mysterious beast and reveals the truth behind the most riveting Bigfoot encounters ever captured on tape. After years of searching, can this intrepid team finally find the enigmatic Yeti? In the first episode, find out more about the Bigfoot adventures of Bobo, Cliff, Matt and Ranae as they return to Ohio to discuss their highlights and answer question from fans.

**ANIMAL  
PLANET** HD

CONTACT  
[kate\\_keilty@discovery.com](mailto:kate_keilty@discovery.com)



# TANKED

UK SERIES PREMIERE

WEDNESDAYS FROM 4TH SEPTEMBER, 8.00PM

*Tanked* returns with a new series that immerses viewers into the rowdy, family-owned business of Acrylic Tank Manufacturing (ATM), one of USA's leading and most successful builders of aquariums. ATM is led by brothers-in-law, business partners, best friends and rivals, Wayde King and Brett Raymer, and is housed in a state-of-the-art, cavernous facility located in the center of Sin City. ATM literally has created thousands of enormous, jaw-dropping aquarium builds and conceptual tanks for ordinary customers and high-profile clients alike. In the new series follow the antics of Wayde and Brett as they produce some of the most outrageous, larger-than-life and one-of-a-kind tanks for some of the most striking fish and clients around the world.

No job is too big or too outlandish for the ambitious duo. From creating a syringe shaped aquarium, to a large indoor tank to house sharks and alligators, Wayde and Brett do everything they can to provide their fellow fish enthusiasts with a personalised piece of the ocean. Working alongside their opinionated and outrageous family and staff, including Wayde's wife, Heather, and Brett, Heather's father aka 'The General,' this entertaining show reveals the stresses and successes of a business that has been running strong for 14 years. Dive head first into the high-decibel, family-owned business and witness the development of each amazing project from conception to the final reveal.

**ANIMAL  
PLANET HD**

CONTACT  
[kate\\_keilty@discovery.com](mailto:kate_keilty@discovery.com)



# TREEHOUSE MASTERS

UK SERIES PREMIERE

WEDNESDAYS FROM 18TH SEPTEMBER, 9.00PM

This new series has viewer's climbing to a majestic world up in the treetops with visionary and tree whisperer Pete Nelson, as he designs private escapes for those with a passion to reconnect with nature and awaken their inner child. Designing multi-bedroom, dream tree houses complete with functional plumbing and electricity, to simple, one-room lofts, Pete goes out on a limb to create breathtaking realties for a host of clientele. However, creating these fantasy arboreal homes

doesn't come easy. Pete and his team of designers and carpenters, including son Charlie, must endure Mother Nature's shifty antics, dangerous construction equipment and dizzy heights in order to build these sanctuaries. In addition to building there hideaways, Pete, along with his wife, Judy, and their daughter Emily, own and operate Tree House Point, a bed and breakfast in Washington, to where people can escape their modern day realties.

**ANIMAL  
PLANET** HD

CONTACT  
[kate\\_keilty@discovery.com](mailto:kate_keilty@discovery.com)



# KINGS CROSS ER

**UK SERIES PREMIERE**

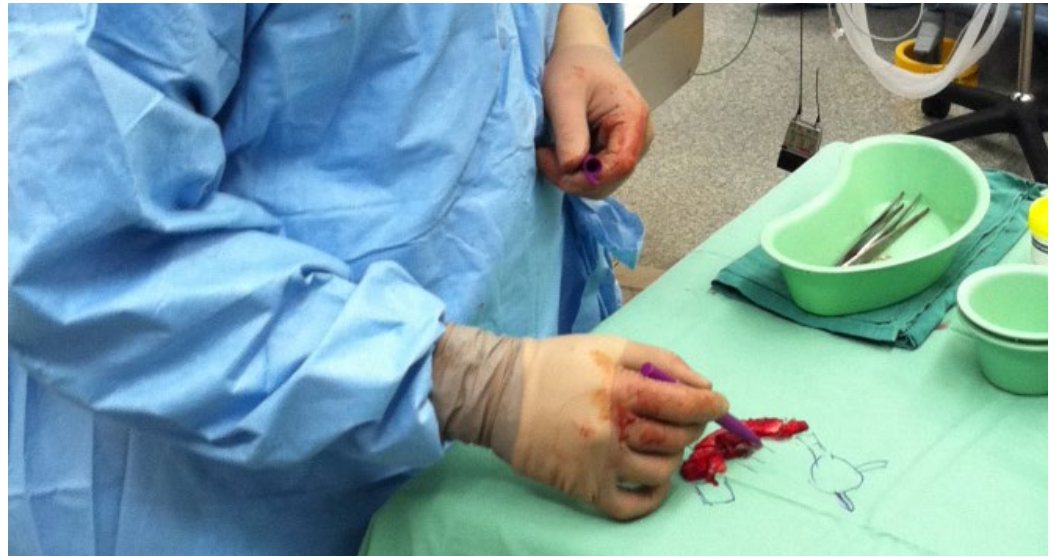
TUESDAYS FROM 3RD SEPTEMBER, 9.00PM

Set in one of the busiest and most unique Emergency Departments in the country, the world class St Vincent's Hospital is just a stone's throw away from Sydney's pumping Central Business District and its entertainment underbelly, Kings Cross. The ER's proximity to the heart of the city and to its darker side provides both the sheer volume of cases and eye-opening reality for the most diverse patient population of any emergency department

in Australia. Through its doors come rock stars, celebrities, billionaire moguls, captains of industry, and the homeless - and all are in need of urgent care. In the first episode its emergency medicine at its toughest when staff are called for a priority emergency - a young man has been stabbed in the heart at a nightclub. Racing against time to save his life, the emergency team is forced to perform high-risk heart surgery.

DISCOVERY  
**home&health**

**CONTACT**  
kate\_keilty@discovery.com



# HOSPITAL SYDNEY

**UK SERIES PREMIERE**

WEDNESDAYS FROM 18TH SEPTEMBER, 9.00PM

Head to the Royal Prince Alfred Hospital for a new series, with more heart-warming stories of courage loaded with drama, emotion, excitement and determination to regain health or survive life-threatening illnesses.

In the first episode meet seven year old Silvia who has travelled all the way from Africa to follow her dream of being able to walk and Sam, a twenty year old who puts on a brave face as he struggles with a mystery illness.

DISCOVERY  
**home&health**

**CONTACT**  
kate\_keilty@discovery.com





# DEADLY WOMEN UK

**UK SERIES PREMIERE**

THURSDAYS FROM 19TH SEPTEMBER, 10.00PM

There are more than 500 murders a year in Britain, with more and more being committed by women, and brand new series *Deadly Women UK* seeks to explore the world of these women who plot, kill and cover-up. The series takes a frank look into real life serial killers including the infamous Myra Hindley and 19th century murderer Kate Webster. In the first episode, find out what really drew Myra Hindley to become a child killer.

Was it the influence of her dangerous partner or was it something more sinister deep within her? Later in the series, we explore one of the most notorious crimes in the late 19th century; the murder of Julia Martha Thomas, known as the Barnes Mystery. Kate Webster, her maid, was found guilty of her murder and executed for her crime, but the reasoning for the murder still remains a mystery.



**CONTACT**

[kate\\_keilty@discovery.com](mailto:kate_keilty@discovery.com)



# KILLER CLANS

**UK SERIES PREMIERE**

WEDNESDAYS FROM 11TH SEPTEMBER, 9.00PM

Hidden among the seemingly peaceful suburbs of America, there lies a bizarre patchwork of unique subcultures and secret societies - extraordinary communities that live on the periphery according to their own set of rules, rituals, and traditions. From renegade Amish sects and New Age cults to

centuries-old Gypsy clans, goes into the dark underbelly of a fascinating and foreign world. *Killer Clans* recounts the gripping and unpredictable true stories of everyday people on the search for a sense of belonging in these strange worlds, who end up paying a fatal price.



**CONTACT**

[kate\\_keilty@discovery.com](mailto:kate_keilty@discovery.com)



# POISONED PASSIONS

**UK SERIES PREMIERE**

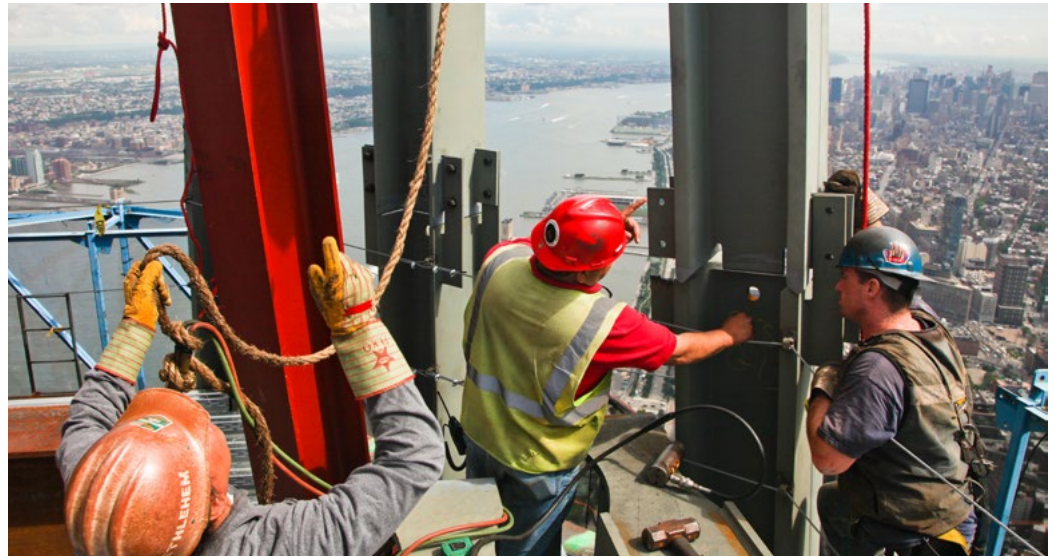
SATURDAYS FROM 28TH SEPTEMBER, 11.00PM

This new series dives into stories of star crossed lovers: women who fall in love with the wrong man, and follows tumultuous romances that test all the limits of love and devotion. The women involved in these relationships reveal how they have found involved in twisted and

often fatal situations. In the first episode millionaire Alfred Bloomingdale lures aspiring teen model Vick Morgan into a sadomasochistic underworld. But when Alfred suddenly dies, Vicki's new habits lead to a dangerous relationship that will end in murder.



**CONTACT**  
[kate\\_keilty@discovery.com](mailto:kate_keilty@discovery.com)



# CROWNING NEW YORK

UK SERIES PREMIERE

WEDNESDAY 11TH SEPTEMBER, 9.00PM

More than a decade after the 9/11 attacks, the stage is set for the rebirth of an iconic skyline, with a beacon that will truly 'crown' New York City. At 1,776 feet, One World Trade Center is now the tallest building in the U.S. and third tallest in the world. To capture the construction worker's remarkable work in placing the 40-story, 758-ton spire on top of a building that was already 104 stories high,

*Crowning New York* shows exclusive footage of the site and its workers, using a helicopter to film the installation. This brand new series will also feature never before seen footage of the immediate aftermath of the 9/11 terrorist attacks, as well as definitive interviews with architect Daniel Libeskind and officials including former Governor George Pataki and former Mayor Rudolph Giuliani.

**QUEST**

CONTACT  
caroline\_watt@discovery.com



# ULTIMATE COPS

UK SERIES PREMIERE

WEDNESDAYS FROM 18TH SEPTEMBER, 10.00PM

*Ultimate Cops* is a new six-part series packed with real-life action, car chases, guns and explosions. Following the elite police forces of Moscow, Bucharest and Warsaw, the series captures real crime missions as they unfold. From breaking

doors to apprehending criminals, these three teams of specially trained elite police officers, armed with weapons and skills to match, overwhelm the crime of their city's streets.

**QUEST**

CONTACT  
[caroline\\_watt@discovery.com](mailto:caroline_watt@discovery.com)



# SALVAGE HUNTERS

UK SERIES PREMIERE

MONDAYS FROM 23RD SEPTEMBER, 9.00PM

Modern-day treasure hunter Drew Pritchard is one of Britain's leading salvage dealers. Back for a new series of *Salvage Hunters*, he continues to scour the country for weird and wonderful objects. He'll cross land and water in his hunt for treasure. There's nothing he won't buy and with help from his wife

Rebecca and his team of renovators, he transforms thousands of items from junk to gems. In the first episode Drew is captivated by an ancient Northumberland house, there are mysteries to be solved at a mid-Wales mansion and deals to be made in Derbyshire.

QUEST

CONTACT

[caroline\\_watt@discovery.com](mailto:caroline_watt@discovery.com)



# WEAPONS THAT CHANGED THE WORLD

UK SERIES PREMIERE

TUESDAYS FROM 17TH SEPTEMBER, 9.00PM

What ten weapons have truly altered the course of history? *Weapons That Changed the World* provides a fascinating insight and investigates different weapons of the post nuclear age, with each episode focusing on a different type of weapon including shotguns, tanks and pistols. Richard Machowicz from Future Weapons hosts this unique series,

controversial yet surprising, and manages to get his hands on many of the weapons to test and trial them. Their history and significance are discussed by a number of world leading experts, so get ready for some shock, awe and interesting facts. Episode one explores The Ma Deuce, a heavy machine gun designed towards the end of World War One.

QUEST

CONTACT

[caroline\\_watt@discovery.com](mailto:caroline_watt@discovery.com)



# SPECIAL FORCES SECRETS

UK SERIES PREMIERE

SUNDAYS FROM 8TH SEPTEMBER, 10.00PM

Gain a captivating insight into America's most mysterious law enforcement agency in *Special Forces Secrets*. With the safety of the President of the United States inextricably tied with the security of the free world, the men and women trusted to protect him must be the best of the best. Wary of every potential threat and on constant alert, this highly trained

guardian force must be prepared to put themselves in personal danger, whilst keeping their work invisible to the public. Learn more about these elite agents and explore the classified technology, specially designed weapons, bullet-proof fabrics, secret strategies and human courage that combine to provide the best protection possible.





# ALIEN ENCOUNTER

UK SERIES PREMIERE

MONDAYS FROM 23RD SEPTEMBER, 10.00PM

What would really happen if we got a message from space? How would humans react if we learnt there was a spaceship on its way to Earth? Setting out a plausible hypothetical scenario for a first contact event, *Alien Encounters* probes the minds of some of the world's leading astrophysicists, astrobiologists and sci-fi writers, to explore how alien life might communicate with humanity. Featuring fascinating insights from experts including Nick Sagan, the son of SETI (Search for

Extraterrestrial Intelligence) founder Carl Sagan, this compelling two part documentary unravels the scientific, cultural and psychological impact of this intriguing world-changing event. Incredibly there seems to be no official plan if contact is made. But one thing is clear, on the day that we come face to face with alien life forms, our perceptions about who we are, what we think and what we believe in will never be the same.



CONTACT  
caroline\_watt@discovery.com



# HOLMES INSPECTION

UK SERIES PREMIERE

MONDAYS FROM 2ND SEPTEMBER, 10.00PM

*Holmes Inspection* shines a spotlight on homeowners facing massive repair bills and dangerous living conditions due to incompetence within the unregulated home inspection industry. Each show offers a unique dilemma faced by house purchasers who, misled by a vague or evasive home inspection, now face a daunting renovation or potential health threat. Disillusioned and now distrusting, they call in Mike Holmes, from Holmeson Homes,

who gives his personal Holmes Inspection and makes it right. Can Holmes turn these nightmare houses into the dream homes that these couples expected? This series includes a couple whose home is riddled with mould. Suspicion is raised when a couple bought a house on the condition that they didn't have a home inspection before buying, and deadly asbestos and dodgy plumbing are discovered.

Discovery  
**Shed.**

CONTACT  
caroline\_watt@discovery.com



# COWBOY BUILDERS

UK SERIES PREMIERE

SATURDAYS FROM 21ST SEPTEMBER, 9.00PM

*Cowboy Builders* follows the nation's builders who are causing devastation and dismay up and down the country. These reckless workmen are bad news, leaving behind them piles of rubble, financial angst and heartache - and it's up to our team to fix up ruined homes and drive the bad builders out of town. Standing up for aggrieved consumers everywhere

are Dominic Littlewood and Melinda Messenger who run in to their first cowgirl builder in Nottingham. Can they undo her bad work and save this couple's home? Also in the first episode the team is in South London where a botch job on an extension has left a couple's house in chaos; can they restore order?

Discovery  
**Shed.**

CONTACT  
caroline\_watt@discovery.com



# JESSE JAMES OUTLAW GARAGE

UK SERIES PREMIERE

WEEKDAYS FROM 2ND SEPTEMBER, 10.00PM

Everything is bigger - and better - in Texas. Jesse is getting back to his roots in *Jesse James Outlaw Garage*, as one of the best metal fabricators in the world. Now a part owner of the Austin Speed Shop, Jesse sets a new mantra for the shop...build the highest quality, most badass cars in the world. The stakes are high and the pressure is on. Customizing

cars and trucks, with zero tolerance for mistakes, Jesse unleashes his creative style and unapologetic attitude. Jesse pushes his new crew into uncharted territory to make the Austin Speed Shop into the best custom car shop in the country and puts his employees to the test by challenging them to rebuild a 32 Ford Roadster in only a month.

**turbo**

CONTACT

caroline\_watt@discovery.com

# Contacts

## DISCOVERY NETWORKS UK

Caroline Watt, Senior Publicity Manager

+44 (0) 20 8811 3584

[caroline\\_watt@discovery.com](mailto:caroline_watt@discovery.com)

Kate Keilty, PR Manager

+44 (0) 20 8811 3542

[kate\\_keilty@discovery.com](mailto:kate_keilty@discovery.com)

Katrina Wareham, Picture Lead

+44 (0) 208 811 4266

[katrina\\_wareham@discovery.com](mailto:katrina_wareham@discovery.com)

Miriam Boulia, Publicity Assistant

+44 (0) 20 8811 3339

[miriam\\_boulia@discovery.com](mailto:miriam_boulia@discovery.com)

## PUBLICITY STILLS & FURTHER INFORMATION

[press.discovery.com/uk](http://press.discovery.com/uk)