

If you do not currently receive our monthly highlights and would like to, please email caroline_watt@discovery.com

[Click here for press office contacts](#)

Click on logo to go directly to channel

Discovery
CHANNEL™



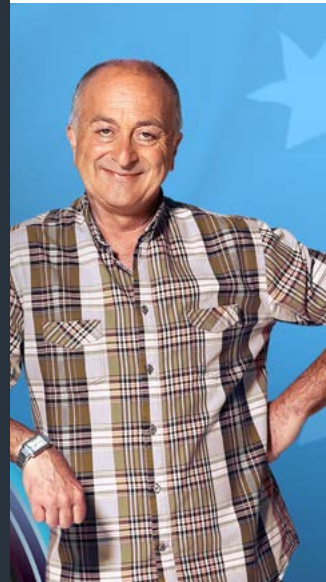
ANIMAL
PLANET



DISCOVERY
home&health



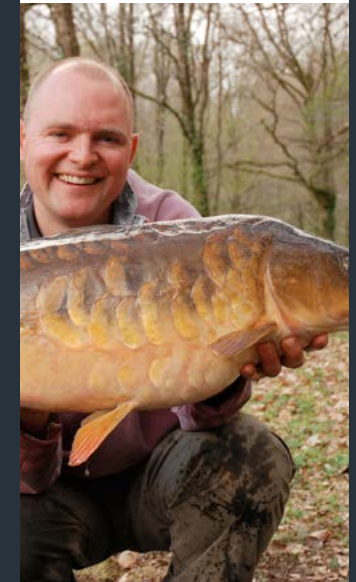
Discovery
HISTORY



ID
INVESTIGATION
DISCOVERY



Discovery
Shed.



Highlights **December 2013**

Discovery
NETWORKS™



JUNGLE GOLD

UK SERIES PREMIERE

TUESDAYS FROM 3RD DECEMBER, 9.00PM

As the notorious rainy season in Ghana persists, George Wright and Scott Lomu continue their quest for gold in *Jungle Gold*, with one last shot to clear their mounting debt. This series, George and Scott meet British gold prospector Dave Thomas who has offered them the chance to mine a gold-rich claim at Fahiakobo, in the heart of Ghana's gold-mining belt. But Dave has given the guys an ultimatum: they have seven days to prove they can find the gold on the claim.

If they fail, he'll kill the deal. Later on in the series The Ghanaian Government crackdown on illegal foreign miners which threatens the guys' gold mining future. Can they avoid becoming public enemy number one?

Discovery
CHANNEL

CONTACT

caroline_watt@discovery.com



NAKED & MAROONED: ED BARES ALL

UK ONE-OFF PREMIERE
THURSDAY 5TH DECEMBER, 9.00PM

In this one-off episode, *Naked and Marooned: Ed Bares All*, Ed Stafford reflects on every aspect of his 60 day adventure: what went through his mind in his first few hours on the island as reality of his challenge hit? How did he come up with basic survival techniques to find food, water and shelter? And what were the most surprising challenges of all in being utterly isolated from any other human being for 60 days?

This is Ed's intimate inside story of how his extraordinary experience changed the way he looks at everyday life forever.



AMISH MAFIA

UK SERIES PREMIERE

MONDAY 30TH DECEMBER, 10.00PM

Back for a new series, *Amish Mafia* reveals a secretive world of crime and punishment in a unique community. Following the explosive series finale, this series Lebanon Levi continues on his quest for ultimate harmony and leans on new soldier Jolin as he finds his bearings in Lancaster. Esther and brothers return to Lancaster to find unexpected problems and later on in the series, family alliances are put to the test as Esther has to choose between John and Levi.

The series starts with a two-hour special as John and Esther partake in an Amish exorcism to clean one of their own. Lebanon works to rebuild his crew while Merlin tries to gain control over the Ohio Amish community.



CONTACT

caroline_watt@discovery.com



ALASKA THE LAST FRONTIER

UK SERIES PREMIERE

SUNDAYS FROM 1ST DECEMBER, 9.00PM

The Kilcher family are back for a new series in *Alaska: The Last Frontier* and life continues in the harsh Alaskan wilderness as the family struggle to get through a record-breaking harsh winter.

This series, watch as the family continue their survival and display their ongoing ingenuity and more inventive skills. With spring approaching the family need to build a house for their chickens, but a rogue hen threatens to kill off the brood of chickens. Later on in the series, Atz begins his summer range riding season to protect Otto's cattle herd, but will he keep the predators at bay?

The Kilcher family has an almost instinctive understanding of one another, but living so close has its downfalls as well, as tensions rise and tempers flare without warning.



CONTACT

caroline_watt@discovery.com



PHILLY THROTTLE

UK SERIES PREMIERE

WEDNESDAYS FROM 4TH DECEMBER, 9.00PM

Philly Throttle follows the lives of vintage bike builder Adam Cramer and his motley crew of mechanics as they restore, repair, and flip motorcycles at Liberty Vintage Cycles in Philadelphia. Pressing deadlines, finicky customers, tight budgets and new employees all add to the chaos as Adam navigates the perils of owning a small business in one of the roughest corners of Philadelphia.

In the first episode, Adam and his crew are feeling the heat; faced with a cut-off notice from the electric company, the team races against the clock to complete two bikes. One will pay the bills, the other will cement the reputation of the shop. If they fail, it's game over at Liberty Vintage.

Discovery
CHANNEL

CONTACT

caroline_watt@discovery.com



PATRICK DEMPSEY: RACING LE MANS

UK SERIES PREMIERE

WEDNESDAYS FROM 4TH DECEMBER, 10.00PM

Follow Patrick Dempsey, star of Grey's Anatomy, as he tackles the world's oldest and most gruelling auto endurance race, Le Mans.

Patrick Dempsey: Racing Le Mans features Dempsey and his team as they prepare for the 24 hour sports car endurance race, from sponsor recruitment, to time trials, to juggling his family and Hollywood career, with unlimited access as they prepare to risk everything on Europe's most historic track.



CONTACT

caroline_watt@discovery.com



DIRTY MONEY

UK SERIES PREMIERE

SATURDAYS FROM 7TH DECEMBER, 9.00PM

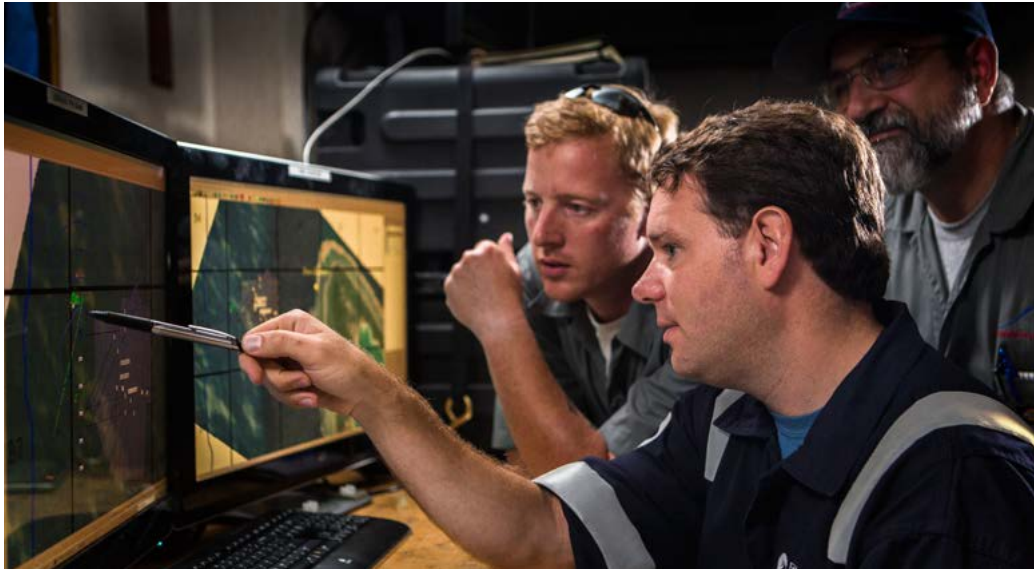
One man's trash is another man's treasure. *Dirty Money* follows two brothers, John and Jimmy Diresta, who live and breathe flea markets, and a few dumpsters. With an uncanny knack for creating must have collectibles, the boys, with the help of John's son Matthew aka 'Rat-Boy, live by the mantra "Find it. Fix it. Sell it!"

These brothers know how to create something out of nothing and turn a tidy profit, whether it's transforming a tattered old bicycle into a chain-saw powered, Evel Knievel inspired bike, or taking a pile of wood and building a beautiful, one-of-a-kind Manhattan skyline bench.

Discovery
CHANNEL

CONTACT

caroline_watt@discovery.com



FINDING AMELIA EARHEART: MYSTERY

UK ONE-OFF PREMIERE
THURSDAY 12TH DECEMBER, 9.00PM

In July 1937, Amelia Earhart disappeared from the skies and entered the realms of myth and mystery. Most people believe that she ran out of fuel and crashed in the sea. But one man is convinced she met a different fate, and he has spent the last 25 years trying to prove it. This one-off episode *Finding Amelia Earheart: Mystery Solved* Ric Gillespie and his team go back to the shores of Nikumaroro, a remote Pacific island where he believes Amelia landed her plane, struggled to survive as a castaway, and died.

He's been there nearly a dozen times, looking for clues and found compelling evidence, but no hard proof. But this time, he's returning with high-tech tools and an ambitious plan for a deep sea search to look for wreckage from Amelia's plane. What has driven Ric to devote his life to solving the greatest of all aviation mysteries? Why is he so sure he's right? And what is it about Amelia that drives us to keep looking? After 75 years of questions, theories and doubts, Ric is putting it all on the line in an attempt to conclusively solve the greatest of all aviation mysteries, and find Amelia.



WILDLIFE AT THE ZOO

UK SERIES PREMIERE

THURSDAY 12TH DECEMBER, 8.00PM & 8.30PM

Wildlife at the Zoo is back for a new series and tells more stories of the animals that live inside and outside of the zoo. Nearly 100 years old, Taronga Zoo in Sydney is home to over 3,400 animals including species that are rare and dangerous. Filmed over a year,

Wildlife at the Zoo looks at Taronga's charismatic animals, and explores the intimate bond that exists between animals and their keepers. In the first episode, a sun bear called Mr. Hobbs who comes to the zoo having been rescued from the Cambodian restaurant industry before he could be dismembered to create bear paw soup.



CONTACT
caroline_watt@discovery.com



DOG DANCING SCHOOL

UK ONE-OFF PREMIERE

TUESDAY 17TH DECEMBER, 8.00PM

Dog Dancing School follows two amateur dog dancing enthusiasts Carol and Victoria and their teacher Angela at the Dog Dancing School in Swindon.

Angela was first inspired to teach dog dancing after watching a feature at Crufts in 2006, and soon opened her dog dancing school, winning a number of competitions. Soon after, her school grew and grew and is now the proud Dog Dancing School.

Carol and Victoria learn how to train their dogs to dance, they have difficulties and challenges along the way, but together with their enthusiasm and guidance from Angela, they may just make it. Filmed over six months, *Dog Dancing School*, details the obedient and the not so obedient canine characters, and their owners.



CONTACT

caroline_watt@discovery.com



WILD ALASKA

UK ONE-OFF PREMIERE

MONDAY 16TH DECEMBER, 8.00PM

Alaska is an ancient wilderness frontier like no other in the U.S. *Wild Alaska* documents what it takes to survive in its wild, surprising and sometimes brutal land which is a battle-ground for a range of top predators.

In the Arctic north, *Wild Alaska* joins the greatest concentration of polar bears on the planet, while on the southern coast, uneasy relationship between two of Alaska's most iconic predators: grey wolves and brown bears is witnessed.



CONTACT
caroline_watt@discovery.com



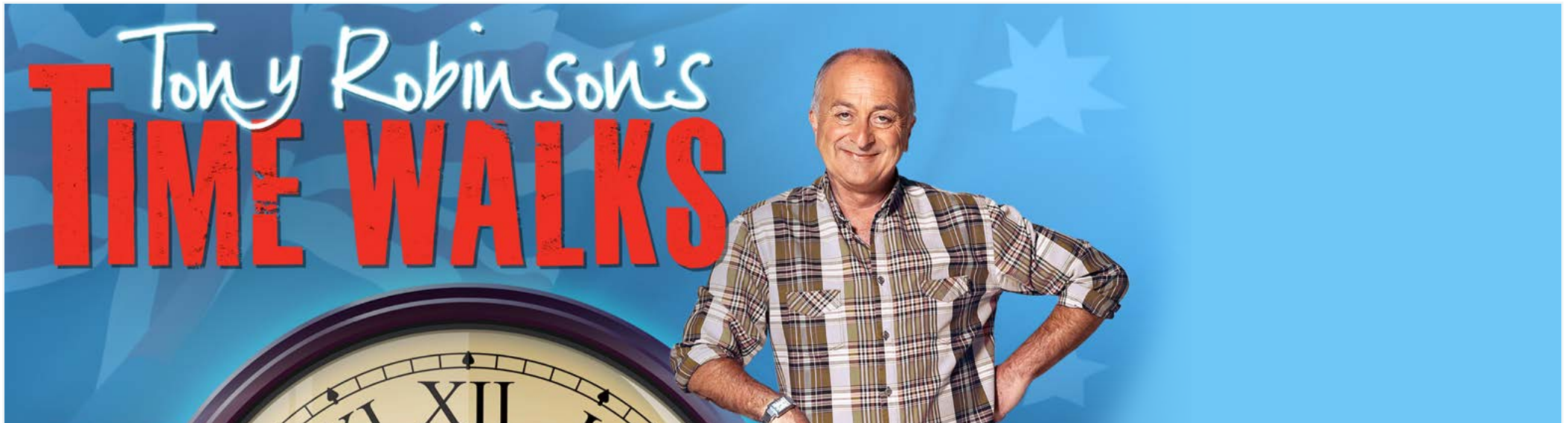
UNTOLD STORIES OF THE HOLIDAY ER

UK ONE-OFF PREMIERE

WEDNESDAY 4TH DECEMBER, 9.00PM

Untold Stories of the Holiday ER documents Christmas Eve on an emergency ward. In this special, follow the night on the ward as a Dr Ed Panacek's team is fighting to save a man dressed as Santa from cardiac arrest. Meanwhile, a man swallows a live fish at an office party and now he can hardly breathe, will Dr Craig Murray be able to save him? Next, a woman is rushed in following a suspected suicide and Nurse Maricar Cabral-Osorio is treating a bizarre case - a young boy with a blue leg.

Once all the patients are treated, will the staff finally be able to go home and enjoy their Christmas?



TONY ROBINSONS TIME WALKS

UK SERIES PREMIERE

MONDAY 16TH DECEMBER, 8.00PM

Tony Robinson takes his inquisitive storytelling across the globe in *Tony Robinson's Time Walks*. His mission is to uncover the hidden history that lies behind, below and above the places that are visited every day Tony travels across Australia and New Zealand from Canberra, where he witnesses the work of Walter Burley Griffin, an American architect, to the historical city of Christchurch, New Zealand where the residents are having to deal with the aftermath of a devastating earthquake.

Divulging the tales of crimes, recounting acts of bravery and exploring notable characters, Tony will retell the stories that have shaped the area and draw out the drama of the past.



CONTACT

caroline_watt@discovery.com



TRUE CRIME WITH APHRODITE JONES

UK SERIES PREMIERE

SUNDAY 1ST DECEMBER, 9.00PM

Crime reporter and best-selling author, Aphrodite Jones, investigates the truth behind the most notorious crimes in recent history in *True Crime with Aphrodite Jones*. In each episode, Jones uses her unconventional and unique instincts to expose the facts about cases that true-crime fans may have been too quick to judge during the media firestorm. Featuring interviews with the people connected to the crime, including, whenever possible, those convicted, Jones tries to get inside the minds of the killers in an effort to understand what drove them to perform such despicable acts.

In the thrilling third series, Jones gains exclusive access to former NFL player, Eric Naposki, who was sentenced to life in prison for the murder of his lover's millionaire boyfriend. Plus, Jones revisits the trial of Casey Anthony, who was acquitted of murdering her toddler, Caylee Anthony. What did the jury see that so many others missed before?



CONTACT
caroline_watt@discovery.com



DESPERATE MEASURES

UK SERIES PREMIERE

MONDAY 2ND DECEMBER, 10.00PM

Brand new series, *Desperate Measures*, reveals the unstoppable drive of desperation, a force so powerful that it drives individuals to do anything they can to come out on top. When people are backed into a corner, their animal instincts emerge and seemingly upstanding citizens are driven to commit incredibly reckless and dangerous acts.

Desperate Measures will tell tales of people so desperate to save a marriage, gain custody of their children or keep their hard earned money, that they are willing to commit unspeakable acts of murder and violence.



CONTACT
caroline_watt@discovery.com



GAME FISHER'S DIARY

UK SERIES PREMIERE

FRIDAY 6TH DECEMBER, 10.00PM & 10.30PM

Escape to some of the most picturesque landscapes of the countryside with *Game Fisher's Diary*. Rae Borrás has come a long way since his amateur boxing days and has decided to turn his hand to one of his favourite past times - fishing. The new series shares fishing expertise and demonstrates top techniques and tricks, taking us to the best spots in the country and achieving the greatest fishing results. Rae is accompanied by some of Britain's most talented anglers to help him along the way with some one-on-one tuition to ensure the best catch.

When Rae visits Ripon in Yorkshire he is joined by one of the rising stars of the fly fishing world, Scott Nellins, who has just qualified to fish for the European team. From tackling the arctic conditions in Iceland, to visiting Scotland's hallowed River Tweed, Rae shows us some of the little treasures that are right under our noses.

Discovery
Shed.

CONTACT
caroline_watt@discovery.com

CONTACTS

DISCOVERY NETWORKS UK

Caroline Watt, Senior Publicity Manager
+44 (0) 20 8811 3584
caroline_watt@discovery.com

James Hall, Publicist
+44 (0) 20 8811 3542
james_hall@discovery.com

Katrina Wareham, Picture Lead
+44 (0) 208 811 4266
katrina_wareham@discovery.com

Miriam Boulia, Publicity Assistant
+44 (0) 20 8811 3339
miriam_boulia@discovery.com

PUBLICITY STILLS & FURTHER INFORMATION
press.discovery.com/uk

